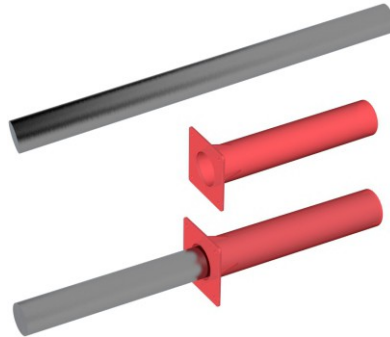




Asortimentas

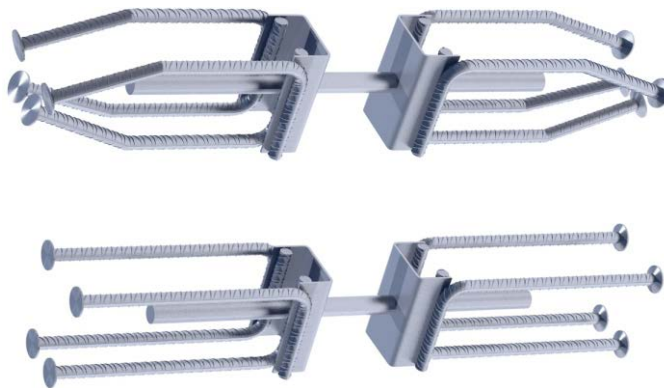
Connectors of the light type

- ➔ X-TEC X-20L
- ➔ X-TEC X-25L
- ➔ X-TEC X-30L



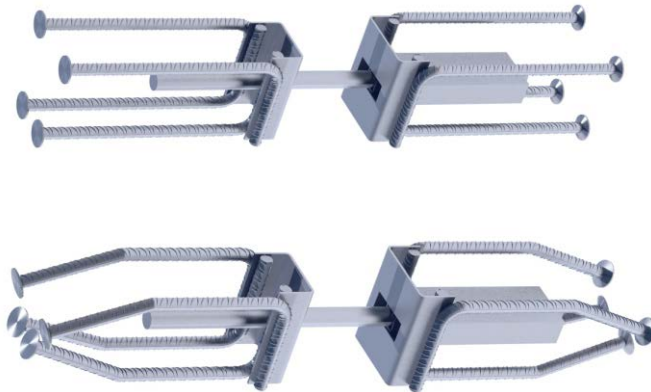
One-way connectors of the heavy type

- ➔ X-TEC X-25
- ➔ X-TEC X-30
- ➔ X-TEC X-35



Two-way connectors of the heavy type

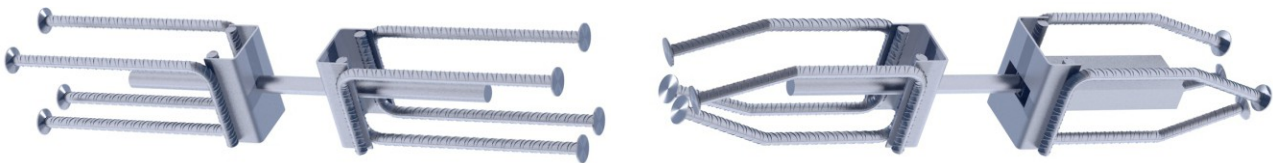
- ➔ X-TEC X-25
- ➔ X-TEC X-30
- ➔ X-TEC X-35



**Techninės specifikacijos - laikomoji galia**

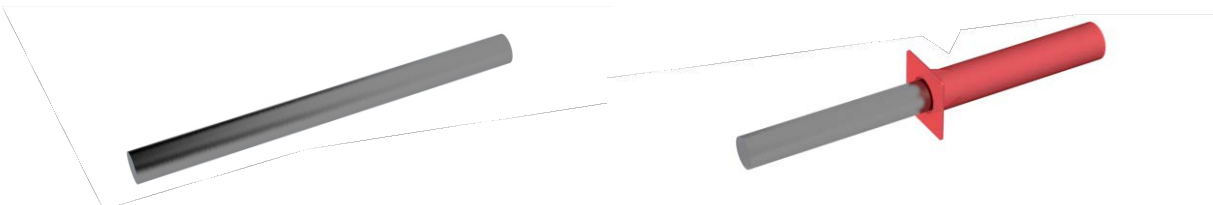
**Load capacity of connectors of the heavy type  $V_{RD,S}$  KN**

Item	Type	Gap < 20 mm	Gap < 30 mm	Gap < 40 mm	Gap < 50 mm	Gap < 60 mm
1	X-25	104.94	85.33	66.24	52.99	44.16
2	X-30	160.53	137.00	113.46	91.57	76.30
3	X-35	227.66	200.20	172.74	145.29	121.17
4	X-25V	94.45	76.80	59.61	47.69	39.74
5	X-30V	144.48	123.30	102.12	82.41	68.67
6	X-35V	204.89	180.18	155.47	130.76	109.05



**Load capacity of connectors of the light type  $V_{RD,S}$  KN**

Item	Type	Gap < 10 mm	Gap < 20 mm	Gap < 30 mm	Gap < 40 mm
1	X-20L	14.3	9.5	7.1	5.7
2	X-25L	24.8	17.1	13.1	10.6
3	X-30L	38.5	27.5	21.4	17.5



**Health and safety recommendations**

When installing Extrea connectors, protective gloves and fully functional tools should be used.

**Notes**

Individual types, dimensions and product catalog numbers are listed in the Extrea S.A. catalog. and on the [www.extrea.pl](http://www.extrea.pl) website